



# WEEKLY BULLETIN

May 7<sup>th</sup> 2012. No 96

**Lou Mawson** : Lakes Hub Coordinator  
**Andrew Dawes** : Lakes Hub – Info. & Admin. Officer Meningie  
**Jo McPhee** : Community Nursery Coordinator Milang  
**Carole Richardson** : Project Officer Coordinator GWLAP Milang  
**Regina Durbridge** : Monitoring & Evaluation Project Officer GWLAP Milang  
**Aaron Cheesman** : Revegetation Planner / Coordinator GWLAP Milang  
**Terry Sim** : Fencing grants Project Officer GWLAP Milang  
**Kerri Bartley** : Lower Lakes and Coorong Community Revegetation Program Project Officer GWLAP Milang  
**Ken Strother** : Revegetation Project Officer GWLAP Meningie  
**Joy Mayberry** : Hub Office Admin assistant ( part time ) Milang  
**Robbyne Barrett** : Hub Office Admin assistant ( part time ) Meningie

## Lakes Hub contacts

Office – Milang phone **8537 0808**  
Office – Meningie phone **8575 1830**  
Email Milang Office [info@lakeshub.com](mailto:info@lakeshub.com)  
Meningie Office [meningie@lakeshub.com](mailto:meningie@lakeshub.com)  
Web [www.lakeshub.com](http://www.lakeshub.com)

*The Lakes Hub is the initiative of the Milang and District Community Association and is part of the South Australian Government's Murray Futures program, funded by the Australian Government's Water for the Future initiative.*

## Natural resource management regions in Australia

The Department of Sustainability, Environment, Water, Population and Communities and the Department of Agriculture, Fisheries and Forestry share responsibility for delivery of the Australian Government's environment and sustainable agriculture programs, which are broadly referred to as **natural resource management (NRM)**.

Natural resource management regions are based on catchments or bioregions.

The Australian Government, in association with state and territory governments, has identified 56 regions covering all of Australia.

The boundaries for each of the 56 regions were established in agreements between Australian, state and territory governments between December 2002 and June 2004.

The NRM Council has the expertise to advise the State Government about the long term strategic directions for the management of the state's natural resources.

## The SA Natural Resource Management regions

There are eight (8) different regions across the state -:

Adelaide and Mount Lofty Ranges

Alinytjara Wilurara

Eyre Peninsula

Kangaroo Island

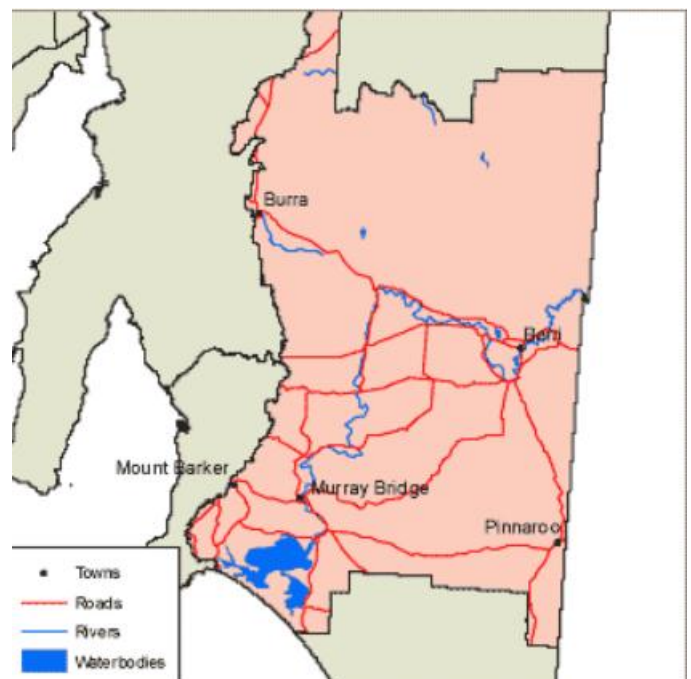
Northern and Yorke

SA Arid Lands

**SA Murray Darling Basin ( this region – the SAMDBNRM )**

South East

The map opposite shows the SA Murray Darling Basin Natural Resource Management region in South Australia



## What is the SAMDBNRM ?

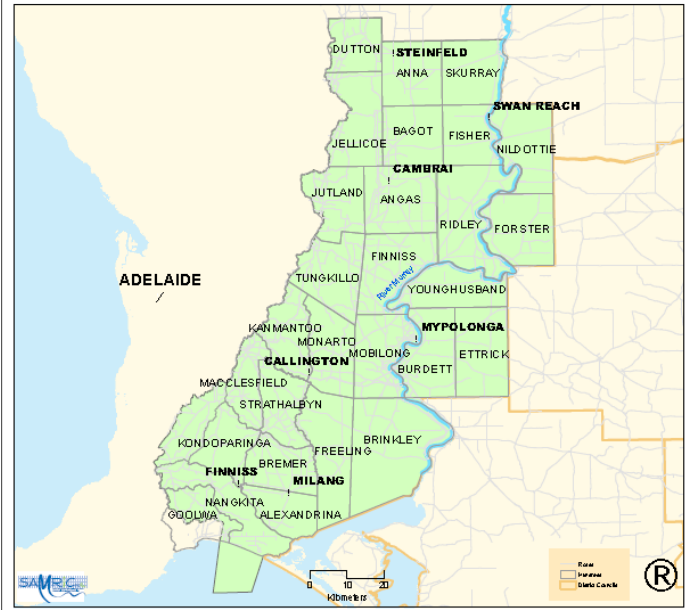
The *Natural Resources Management Act 2004* requires the **South Australian Murray-Darling Basin Natural Resources Management Board ( SAMDBNRM Board )** to prepare a Regional NRM Plan, setting out the policies it will use to protect the environment and the interests of the community.

The preparation of the Regional NRM Plan creates an opportunity for the community and stakeholders to develop an integrated vision for the future of natural resources for the South Australian Murray-Darling Basin region.

The SAMDB NRM Board established four NRM Groups to provide a locally focused link between the Board's strategic position and the activities of the community.

- The Rangelands NRM Group ( north of the River Murray – north and east of Blanchetown)
- The Riverland NRM Group ( northern section of the River Murray – Morgan to Renmark)
- The Mallee and Coorong NRM Group – see map
- The Ranges to River NRM Group – see map

## SA Murray-Darling Basin NRM Region Ranges to River



## Below : The Mallee & Coorong NRM Region



## Ranges to River NRM Volunteer Celebrations

The Ranges to River Natural Resource Management Board invite you to come and celebrate the contribution that you and other volunteers make to the management of the Ranges to River area's precious natural resources.

**WHEN :** Sunday May 27<sup>th</sup> 10.00am – 2.30pm

**WHERE:** Monarto Zoo

**COST :** Monarto zoo tour and lunch is FREE to NRM volunteers ( other members of the community are welcome – discount fees apply)

**RSVP :** By 13<sup>th</sup> May to Jodie Sommerville 08 8532 9100 or Email : [jodie.sommerville2@sa.gov.au](mailto:jodie.sommerville2@sa.gov.au)



## Attention all bird lovers

We all love Yellow-tailed Black-cockatoos (YTBC), often heard as they fly in the open sky above the tree canopy, but how much do we know about them and is their population secure? In 2011, the Biodiversity Conservation Unit (BCU) decided to have a go at determining the population size of our beloved YTBC and thanks to the dedication of over 70 volunteers, our final count was greater than our expectations with just over 2,000 individuals accounted for. However this is but one count, and for this figure to be of use as a population estimate, and so that we can later measure population changes in years from now, it requires clarification.

Typically, the YTBC have a long breeding season over spring/summer at which time the birds disperse across the Mount Lofty Ranges in search of nesting hollows with convenient food resources nearby. Once nest attendance duties have ceased for the year and young birds have fledged, YTBCs tend to congregate together in the safety of large flocks over autumn/winter navigating the region for food. It is at this time that counting the YTBC will be most practical.

The 2012 YTBC Census is a bird watching exercise where dedicated volunteers are allocated to determined locations and are asked to count the number and determine the sexes of all the YTBC witnessed in a day. The census is currently set to be organized for two days on the weekend of the 26th and 27th of May (pending weather). Volunteers may assist on both days, and either the Saturday or Sunday. On each of these days, it is ideal that volunteers are available to be at a given location from the early morning to the late afternoon.

If you are interested in helping out and wish to register to volunteer, please indicate by email so I can send you further information!

**Charlie Bensen, Biodiversity Project Assistant, Biodiversity Conservation Unit** Adelaide Region Regional Services

T: (08) 8336 0239

M: 0409 288 421

E: [Charlie.Bensen@sa.gov.au](mailto:Charlie.Bensen@sa.gov.au)



## Clayton regulator “Talking Heads”

The Lakes Hub at Milang will host a “Talking Heads” drop-in afternoon on Wednesday 16 May to provide the latest information about the removal of the Clayton regulator.

Staff from the Department for Water and the Department of Environment and Natural Resources will be on hand from 2.00pm until 5.00pm to answer any questions from the community about the removal work.

## Free E-Waste drop off for regional householders

During the month of May, unwanted computer and electrical equipment can be dropped off for recycling at the locations below, free of charge.

### GOOLWA

Goolwa Waste and Recycling Depot, Goolwa to Victor Harbor Road.

Open Mon – Fri 8.30am – 4.30pm Sat & Sun 10.00am – 4.00pm

Phone 8555 7620

### MURRAY BRIDGE

Brinkley Transfer Station, Brinkley Road ( 6kms for the racecourse)

Open Mon to Sat 10.00am – 4.00pm

Phone : 8532 6385



### What you can drop off

Computer equipment, home office equipment/mobiles, entertainment equipment – Contact depots for more info.

### What you can't drop off

Whitegoods, vacuum cleaners, microwaves and other kitchen appliances, batteries, projectors, flouro tubes, etc

## The Natural Resources Management Community Grants for 2012-13 are now open.

The Minister for Sustainability, Environment and Conservation, Paul Caica, has announced \$2 million in grants to support community groups undertake projects to protect natural resources in their local area.

The 2012-13 State Natural Resources Management (NRM) Program Community Grants are being made available to support land care, coast care and water care projects. Funding will be provided for a range of NRM activities such as sustainable land management, weed control, native plant revegetation soil protection, fencing watercourses, and habitat protection for native animals.

Small grants up to \$10,000 and medium grants between \$10,001 and \$30,000 are available.

The closing date for applications is **5pm Friday 18 May 2012**.

Further information including how to apply is available on the NRM website at: <http://www.nrm.sa.gov.au/Funding/CommunityGrants.aspx> and on the DENR website at:

[http://www.environment.sa.gov.au/Conservation/Managing\\_natural\\_resources/Funding/State\\_NRM\\_Program - Community Grants](http://www.environment.sa.gov.au/Conservation/Managing_natural_resources/Funding/State_NRM_Program_-_Community_Grants)

You are encouraged to contact your NRM Region to discuss how your proposed activities will contribute towards the region's NRM targets and for any technical advice. Contact details are provided in the Grant Guidelines.

For enquiries relating to the grants please contact Liz Matthews on 8303 9712 or email [denrnmprogram@sa.gov.au](mailto:denrnmprogram@sa.gov.au).

## Muntries Berries



Muntries are a berry that grows on the plant *Kunzea pomifera*, a low ground cover plant.

*Photo at left : Where muntries grow naturally in Australia*  
*Photo at right : Muntries growing in their natural habitat.*

This plant is indigenous to the south coast of Australia in particular the Coorong and lakes region.



The Muntrie is one of Australia's oldest bush foods. The tasty little berries have up to 4 times the anti-oxidants of Blue berries. They have a sweet, spicy, apple flavour and can be eaten fresh or used in many sweet or savoury dishes. The anti-oxidants and wax can be extracted to make hand cream and other beauty products.

Muntries fruit in February through to April in this region. In some northern regions the *Kunzea pomifera* is recorded as threatened and in the more southern regions this plant is recorded as uncommon.

## RIVER MURRAY – weekly FLOW ADVICE

For weekly flow / level reports on the River Murray and Lakes go to the following website [www.waterforgood.sa.gov.au](http://www.waterforgood.sa.gov.au)

Up-to-date River Murray flow and water level information can be accessed at the Department for Water, SA Water and Murray-Darling Basin Authority websites:

<https://www.waterconnect.sa.gov.au/RMWD/Pages/default.aspx>

[www.sawater.com.au/SAWater/Environment/TheRiverMurray/River+Murray+Levels.htm](http://www.sawater.com.au/SAWater/Environment/TheRiverMurray/River+Murray+Levels.htm)

<http://www.mdba.gov.au/water/live-river-data>

Details of river height and rainfall information in the River Murray within Victoria and New South Wales are available at the Bureau of Meteorology website:

<http://www.bom.gov.au/vic/flood>

Information on the discharge of acid drainage water into the Lower River Murray can be accessed online at

[www.waterforgood.sa.gov.au](http://www.waterforgood.sa.gov.au)

## DAILY RECORDINGS – RIVER MURRAY DATA

Data received from <http://e-nrims.dwlbc.sa.gov.au/Telemetry/Default.aspx?App=RMW>

DATE

APR 30 - MAY 4 2012

DATE	SITE	WATER LEVEL (AHD)	SALT (EC)
30	GOOLWA	0.754	544
1		0.625	530
2		0.666	485
3		0.631	461
4		0.602	399
	<b>AVERAGE</b>	<b>0.656</b>	<b>484</b>
DATE	SITE	WATER LEVEL ( AHD)	SALT (EC)
30	MILANG JETTY	0.746	677
1		0.723	674
2		0.753	662
3		0.686	663
4		0.696	658
	<b>AVERAGE</b>	<b>0.721</b>	<b>667</b>
DATE	SITE	WATER LEVEL (AHD)	SALT (EC)
30	RAUKKAN OFFSHORE	0.741	453
1		0.712	323
2		0.725	310
3		0.700	452
4		0.697	406
	<b>AVERAGE</b>	<b>0.715</b>	<b>389</b>
DATE	SITE	WATER LEVEL (AHD)	SALT (EC)
30	MENINGIE JETTY	0.777	4490
1		0.756	4498
2		0.698	4463
3		0.715	4385
4		0.729	4296
	<b>AVERAGE</b>	<b>0.737</b>	<b>4426</b>
DATE	SITE	WATER LEVEL (AHD)	SALT (EC)
30	NORTH WARRENGIE POINT LAKE ALBERT	0.792	4710
1		0.740	4732
2		0.740	4685
3		0.746	4652
4		0.755	4679
	<b>AVERAGE</b>	<b>0.755</b>	<b>4692</b>

### April averages 2012

Water level salt (EC)

Goolwa	<b>0.677</b>	<b>945</b>
Milang jetty	<b>0.711</b>	<b>721</b>
Raukkan	<b>0.707</b>	<b>431</b>
Meningie	<b>0.730</b>	<b>4649</b>
Warrengie	<b>0.738</b>	<b>4746</b>

### April averages 2011

	WATER LEVEL AHD	SALT (EC)
Clayton	<b>0.575</b>	<b>454</b>
Milang	<b>0.633</b>	<b>464</b>
H.Island	<b>0.537</b>	<b>838</b>
Albert	<b>0.731</b>	<b>6698</b>

## CALENDAR OF EVENTS for more info contact the Lakes Hub

If you have any relevant community event or courses that you would like added to the Calendar of Events please contact the Lakes Hub.

### MAY 2012

1	
2	
3	
4	
5	
6	
7	
8	<b>3RD SA WEED CONFERENCE CONTACT</b> : Shauna Potter ph 8303 9748 or Email : <a href="mailto:Shauna.Potter@sa.gov.au">Shauna.Potter@sa.gov.au</a>
9	<b>3RD SA WEED CONFERENCE CONTACT</b> : Shauna Potter ph 8303 9748 or Email : <a href="mailto:Shauna.Potter@sa.gov.au">Shauna.Potter@sa.gov.au</a>
10	<b>FREE VOLUNTEER TRAINING INTRODUCTION TO CORPORATE GOVERNANCE</b> RSVP to Miranda Leckie Tel: 08 8532 9100 MDBANRM Email: <a href="mailto:miranda.leckie@sa.gov.au">miranda.leckie@sa.gov.au</a>
11	
12	
13	
14	
15	<b>FREE VOLUNTEER TRAINING NATIVE PLANT PROPAGATION</b> RSVP to Miranda Leckie Tel: 08 8532 9100 MDBANRM Email: <a href="mailto:miranda.leckie@sa.gov.au">miranda.leckie@sa.gov.au</a>
16	<b>TALKING HEADS 'DROP IN' AFTERNOON</b> – topic: Clayton Regular removal. From 2 – 5pm at the Lakes Hub, Milang – no booking required.
17	Closing date for NRM grants
18	
19	
20	
21	
22	
23	
24	
25	
26	
27	
28	
29	
30	
31	

#### Disclaimer

All the links and articles in this Bulletin are provided as a courtesy to recipients. While I try and keep these links and articles as up-to-date as possible, I can't guarantee their accuracy, adequacy, timeliness, or completeness.

In addition, the existence of a link to another site or resource does not constitute a recommendation or endorsement of that site or resource. The Lakes Hub does not accept responsibility or liability for any information at any of the sites linked to from this Bulletin.

If you feel a link description, site, piece of advice or anything else mentioned here is inappropriate, do [let me know](#) and I will endeavour to correct it where necessary.