



# WEEKLY BULLETIN

January 30<sup>th</sup> 2012. No 82

**Lou Mawson** : Lakes Hub Coordinator  
**Andrew Dawes** : Lakes Hub – Info. & Admin. Officer Meningie  
**Jo McPhee** : Community Nursery Coordinator Milang  
**Carole Richardson** : Project Officer Coordinator GWLAP Milang  
**Regina Durbridge** : Monitoring & Evaluation Project Officer GWLAP Milang  
**Aaron Cheesman** : Revegetation Planner / Coordinator GWLAP Milang  
**Terry Sim** : Fencing grants Project Officer GWLAP Milang  
**Kerri Bartley** : Lower Lakes and Coorong Community Revegetation Program Project Officer GWLAP Milang  
**Ken Strother** : Revegetation Project Officer GWLAP Meningie  
**Joy Mayberry** : Hub Office Admin assistant ( part time ) Milang  
**Robbyne Barrett** : Hub Office Admin assistant ( part time) Meningie

## Lakes Hub contacts

Office – Milang phone 8537 0808  
Office – Meningie phone 8575 1830  
Email Milang Office [info@lakesub.com](mailto:info@lakesub.com)  
Meningie Office [meningie@lakeshub.com](mailto:meningie@lakeshub.com)  
Web [www.lakeshub.com](http://www.lakeshub.com)

*The Lakes Hub is the initiative of the Milang and District Community Association and is part of the South Australian Government's Murray Futures program, funded by the Australian Government's Water for the Future initiative.*

## The paddle steamers of the Murray

The *Mary Ann* was the first paddle steamer to be launched on the Murray River. She was constructed by William and Thomas Randell and was launched at Mannum in 1853. Mannum was then the centre for ship building and river transport closely followed by Milang.



In 1870 there were nearly 240 river boats plying the system with hundreds of thousands of tonnes of cargo such as wheat, wool and other produce being shipped.

River towns such as Goolwa, Murray Bridge, Morgan, Wentworth, Mildura and Echuca become vital ports for distribution to the capital cities. Revenue raised from Border Tariffs became a real challenge for river boat captains and the Colonies of South Australia, NSW and Victoria as businesses used the Murray to avoid paying their taxes.

A succession of dry years from 1895, culminating in the record drought of 1902, brought general acceptance that some drought protection was required to allow further development of the Murray. Irrigation was seen as a primary source of growth and South Australia was also keen to protect its river boat trade.

It was agreed in 1915 that a series of locks and weirs would be built along the Murray to better utilise water storages on the Murray River.

At a similar time modern rail and road networks took over the role of moving goods from the region and so the river boat industry began a rapid decline. Many vessels fell into disrepair and abandoned.

Ironically, today the River Murray has the largest fleet of operational river paddle steamers and paddle boats in the world.

There are 61 identified ship wrecks along the Murray and Lake Alexandrina and Lake Albert – the river and lakes were a dangerous transport route at times.

For more information <http://www.murrayriver.com.au/paddleboats/building-of-the-mary-ann>

## Timely reminder about Mosquito awareness

Australian Associated Press has released another warning regarding the threat of mosquito borne disease. To view this article go to

<http://au.news.yahoo.com/a/-/latest/12694860/deadly-mosquito-virus-on-rise-in-australia/>

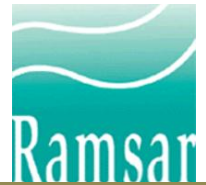


## World Wetland Day February 2<sup>nd</sup> 2012

World Wetland Day is held on the 2<sup>nd</sup> of February every year. The Ramsar Convention indicates a theme each year. This year the theme is 'Wetlands, Tourism and Recreation'.

The Lakes Hub has invited regional information centre personnel to participate in a wetland tour around Lake Alexandrina, Lake Albert and the Coorong. Sixty five ( 65) people from 12 different information centre/ enviro-tourisms groups have registered for this tour which departs on Thursday the 2<sup>nd</sup> February from Milang and Meningie. There will be a summary of this event in next week's Bulletin.

**THE RAMSAR CONVENTION** : The Convention on Wetlands of International Importance holds the unique distinction of being the first modern treaty between nations aimed at conserving natural resources. The signing of the Convention on Wetlands took place in 1971 at the small Iranian town of Ramsar. Since then, the Convention on Wetlands has been known as the [Ramsar Convention](#).



## Your favourite view - photographs

NOMINATE YOUR FAVOURITE VIEW FOR AUSTRALIAN TRAVELLER'S ANNUAL "100" LIST  
NOMINATIONS CLOSE FEBRUARY 1st

The April/May 2012 issue of Australian Traveller features the acclaimed annual "100 List".

This year's topic is: The 100 Best Views in Australia (and How to See Them For Yourself)!

Here is your opportunity to increase awareness of our Lower Lakes and Coorong region. It could be the view from a scenic look-out, from the side of the road, from the top of a hill or along a hiking trail – or even out on a boat.

The Lakes Hub can email you the nomination sheet that will take you no longer than FIVE MINUTES to complete. Please attach a low-res image of the view you are nominating (if you have one) to your email or provide a link to the view online.

Email your nominations to: [100bestviews@australiantraveller.com](mailto:100bestviews@australiantraveller.com) Nominations close February 1, 2012.

For more information go to <http://www.portmacquarieinfo.com.au/blog/detail.aspx?id=115>

## The Point Sturt and Districts Landcare Group Inc.

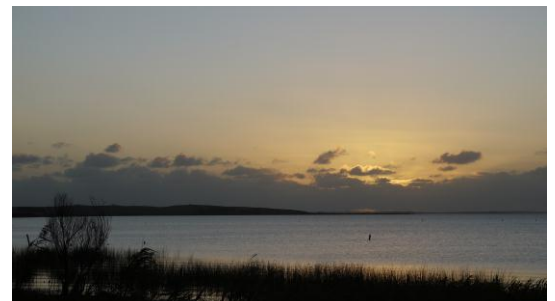
The Point Sturt and District Landcare Group are to hold a General meeting on Friday the 3rd of February in Anne Hartnett's shed at 3.00pm. The meeting is to discuss planning for further work on the Council water reserve on the Northern side of the Point Sturt Peninsula. All welcome - see calendar.

## Salt ( EC) levels in Lake Albert for 2011

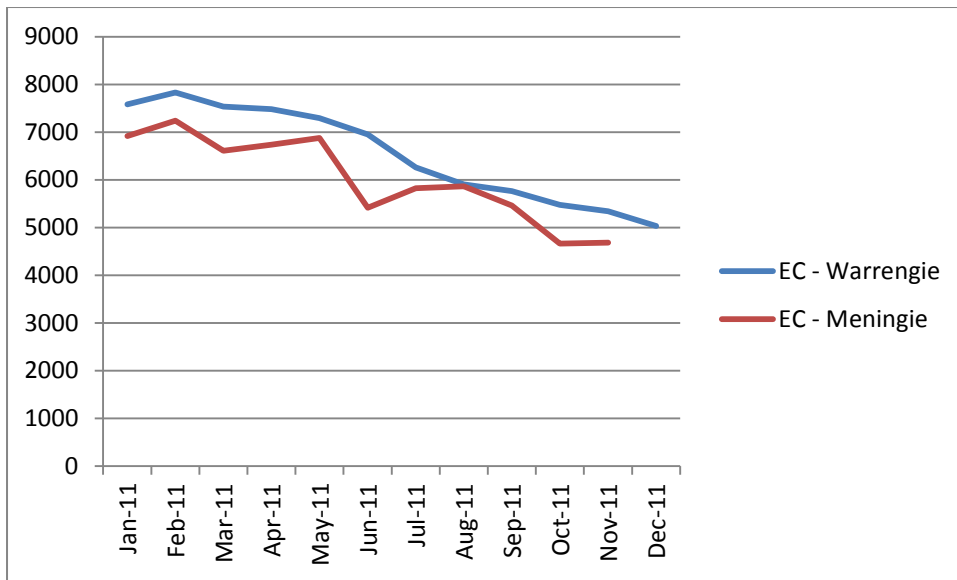
	EC - Warrengie	EC - Meningie
Jan-11	7580	6920
Feb-11	7829	7238
Mar-11	7531	6609
Apr-11	7483	6739
May-11	7291	6875
Jun-11	6952	5414
Jul-11	6261	5822
Aug-11	5901	5867
Sep-11	5762	5462
Oct-11	5475	4661
Nov-11	5341	4684
Dec-11	5029	

Statistics collected from the River Murray Data website

<http://enrims.dwlbc.sa.gov.au/Telemetry/Default.aspx?App=RMW>



Lake Albert from the Meningie Bowling Club.



**NOTE :**

Readings prior to the Narrung Bund breaching in October 2010 were Meningie 7,500 ec and Warringie 9642ec. Warringie had an ec reading of 14,119 in July 2010.

## Environmental Education Courses

The Mt Lofty Ranges Natural Resource Centre have courses available in the following fields in February -:

Land Management, weed management, biodiversity. For more information go to

[http://www.amlnrm.sa.gov.au/Portals/2/events/LMP\\_February%2012.pdf](http://www.amlnrm.sa.gov.au/Portals/2/events/LMP_February%2012.pdf)

Birds Australia Gluepot Reserve has a calendar of courses which includes topics on reptile, photography, botanical illustration, GPS & GIS, birds/watching/ banding, nature painting, diversity and bats. To view the calendar go to

<http://www.riverland.net.au/gluepot/courses.html>

**The Goolwa to Wellington LAP** are running workshops on weed control and management in Wetlands and Swamps.

**What : Controlling Weeds in Wetlands and Swamps**

**Where:** Mt Compass School Swamp Interpretive Centre, Arthur Rd.

**When:** Saturday 10th March, 2012, 9:30-11:30am

**Cost:** FREE!

**RSVP to:** Will Miles, Project Officer, Mb: 0427 917 515, email: [will.miles@gwlap.org.au](mailto:will.miles@gwlap.org.au)

**What : Controlling Weeds in Revegetation Sites**

**Where:**

**When:** Saturday 3<sup>rd</sup> March, 2012, 9:30-11:30am

**Cost:** FREE!

**RSVP to:** Will Miles, Project Officer, Mb: 0427 917 515, email: [will.miles@gwlap.org.au](mailto:will.miles@gwlap.org.au)

The Local Action Planning Associations and the Lakes Hub can conduct free introductory workshops upon request for groups on any subject involving the environment. Groups may be from rural areas, urban areas or schools.

Please contact the Lakes Hub should your group have a request [info@lakeshub.com](mailto:info@lakeshub.com) ph : 0885 370 808

## RIVER MURRAY – weekly FLOW ADVICE

For weekly flow / level reports on the River Murray and Lakes go to the following website [www.waterforgood.sa.gov.au](http://www.waterforgood.sa.gov.au)

Up-to-date River Murray flow and water level information can be accessed at the Department for Water, SA

Water and Murray-Darling Basin Authority websites:

<http://data.rivermurray.sa.gov.au>

Details of river height and rainfall information in the River Murray within Victoria and New South Wales are available at the Bureau of Meteorology website:

<http://www.bom.gov.au/vic/flood>

Information on the discharge of acid drainage water into the Lower River Murray can be accessed online at [www.waterforgood.sa.gov.au](http://www.waterforgood.sa.gov.au)

## DAILY RECORDINGS – RIVER MURRAY DATA

Data received from <http://e-nrims.dwlbc.sa.gov.au/Telemetry/Default.aspx?App=RMW>

DATE

JAN 23 -27

January averages 2012

DATE	SITE	WATER LEVEL (AHD)	SALT (EC)
23	GOOLWA	0.657	593
24		0.612	608
25		0.594	608
26		0.580	610
27		0.695	615
AVERAGE		0.628	607
DATE	SITE	WATER LEVEL ( AHD)	SALT (EC)
23	MILANG JETTY	0.642	550
24		0.631	544
25		0.628	548
26		0.618	559
27		0.652	571
AVERAGE		0.634	554
DATE	SITE	WATER LEVEL (AHD)	SALT (EC)
23	RAUKKAN OFFSHORE	0.636	516
24		0.616	552
25		0.613	568
26		0.604	643
27		0.611	537
AVERAGE		0.616	563
DATE	SITE	WATER LEVEL (AHD)	SALT (EC)
23	MENINGIE JETTY	0.619	4651
24		0.635	4713
25		0.617	4757
26		0.543	4706
27		0.479	4860
AVERAGE		0.579	4737
DATE	SITE	WATER LEVEL (AHD)	SALT (EC)
23	NORTH WARRENGIE POINT LAKE ALBERT	0.641	5106
24		0.674	5060
25		0.627	5033
26		0.557	4880
27		0.510	4707
AVERAGE		0.602	4957

Water level salt (EC)

Goolwa	0.641	2995
Milang jetty	0.659	552
Raukkan	0.646	511
Meningie	0.620	4868
Warrenie	0.633	5022

January averages 2011

	WATER LEVEL AHD	SALT (EC)
Clayton	0.604	735
Milang	0.626	610
H.Island	0.493	727
Albert	0.625	7219

## CALENDAR OF EVENTS for more info contact the Lakes Hub

February 2012	
1	
2	WORLD WETLAND DAY
3	Point Sturt and District Landcare Group general meeting. Anne Hartnet's shed 3.00pm Contact : Bruce Allnutt 0419800574
4	
5	
6	
7	
8	
9	
10	
11	
12	
13	
14	
15	
16	
17	
18	
19	
20	
21	
22	
23	
24	
25	
26	
27	
28	
29	
30	
31	

If you have any relevant community event or courses that you would like added to the Calendar of Events please contact the Lakes Hub.

### Disclaimer

All the links and articles in this Bulletin are provided as a courtesy to recipients. While I try and keep these links and articles as up-to-date as possible, I can't guarantee their accuracy, adequacy, timeliness, or completeness.

In addition, the existence of a link to another site or resource does not constitute a recommendation or endorsement of that site or resource. The Lakes Hub does not accept responsibility or liability for any information at any of the sites linked to from this Bulletin.

If you feel a link description, site, piece of advice or anything else mentioned here is inappropriate, do [let me know](#) and I will endeavour to correct it where necessary.