

Lou Mawson : Lakes Hub Coordinator
Andrew Dawes : Lakes Hub – Info. & Admin. Officer Meningie
Jo McPhee : Community Nursery Coordinator Milang
Carole Richardson : Project Officer Coordinator GWLAP Milang
Regina Durbridge : Monitoring & Evaluation Project Officer GWLAP Milang
Leah Sullivan : Revegetation Project Officer GWLAP Milang
Terry Sim : Fencing grants Project Officer GWLAP Milang
Kerri Bartley : Lower Lakes and Coorong Community Revegetation Program Project Officer GWLAP Milang
Ken Strother : Revegetation Project Officer GWLAP Meningie
Joy Mayberry : Hub Office Admin assistant (part time) Milang
Robbyne Barrett : Hub Office Admin assistant (part time) Meningie

Lakes Hub contacts

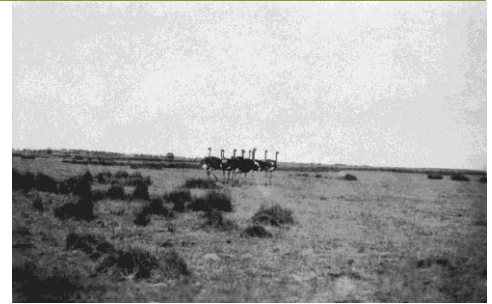
Office – Milang phone 8537 0808
 Office – Meningie phone 8575 1830
 Email Milang Office info@lakesub.com
 Meningie Office meningie@lakeshub.com
 Web www.lakeshub.com

The Lakes Hubs are the initiative of the Milang and District Community Association and are part of the South Australian Government's Murray Futures program, funded by the Australian Government's Water for the Future initiative.

The Birdman of the Coorong



An article from the 'People' magazine, possibly from the 1960's has a curious story to tell about a bushranger in the Coorong who rode an ostrich.



It is noted that there were wild Ostriches in the Coorong area. Several farms in the Lakes region had bred them to harvest their feathers. Up until the late 1960s early 1970s (maybe even later) they were still found feral on the Narrung Peninsula and Coorong.

Picture above shows feral ostriches in the Coorong region in the 1960's

Story summary from The Birdman of the Coorong.

John, Francis Peggotty was born in country Limerick in 1864. He was born a tiny baby and grew to be a very small adult with childlike features which he used to the disadvantage of his victims. For reasons unclear, John travelled to South Africa in his late teens where he learnt to manage and ride ostriches. With the stature of a seven year old child riding atop an ostrich was of no effort to him or the bird. On his return to England Peggotty became a thief with a difference. Being so small he scampered down chimneys of the wealthy and stole jewellery – gold jewellery being his fancy. Eventually this trade caught up with him as he had a tendency to flaunt his 'winnings' by draping the lode over his body and parading around half naked. After a relatively short prison sentence he decided to travel to Australia to live with his farming uncle in NSW but he was not inclined to work on the farm and was caught adorning himself with his wife's jewellery on more than one occasion. From NSW he travelled to Adelaide to join a friend but soon slipped into the old trade of thieving with a gang of likely lads most of whom were caught by the police so Peggotty laid low for a few years. He eventually turned up again in the Coorong. He was labelled the most eccentric bushranger in the history of Australia as he was often seen stripped to the waist and wearing stolen gold jewellery whilst brandishing two ornamental pistols and riding an ostrich.

Peggotty was credited with more than a dozen hold-ups and murder of several travellers in the area before his career ended in September of 1899. A fisherman by the name of Henry Carmichael was less than impressed by being held-up by the diminutive, jewellery laden, ostrich rider and gave chase on his horse. He was a crack shot and had a long range rifle which wounded the rider and killed the ostrich. By the time Carmichael reached the ostrich corpse the wounded Peggotty had scampered off leaving a thick trail of blood in the sand. He had made it to thick scrubland so Carmichael was not willing to pursue this armed man under cover. Peggotty had at least 2 bullets in his body and was bleeding profusely – Carmichael new that he would perish in the sand hills of the Coorong and so departed to report his impending death to the authorities. Peggotty's body was never found, his bones still lie in the Coorong along with at least 1 million dollars' worth of gold and jewellery.

Samphire workshops – Hosted by the Lakes Community Nurseries Network

Samphires are small, native, succulent plants, which have no true leaves.

Samphire wetlands are an important part of the ecosystem; they provide habitat for a large number of invertebrates (insects, spiders, snails etc) which in turn provide food for other native fauna. Samphire flats are also an important nesting habitat for wading birds.

There are 8 species of samphire in the Coorong and Lower Lakes region.

Saltmarsh habitats contain more than samphires - Many saltmarshes around the Lower Lakes also contain 20-30 non-samphire species.



The Lakes Community Nurseries Network will be presenting workshops at both Narrung and Hindmarsh Island in October and November. A summary of the workshops will be in a future Lakes Hub Bulletin.

Learn all about samphire identification & propagation with Faith Cook from Eco Pro Tem.

The workshops will address:

- What are samphires?
- Uses and values.
- Threats and impacts on samphire species.
- Species that occur in the area.
- How to identify them.
- How to collect seed.
- Growing tubestock from seed.

WHEN : Tuesday 25th October 10.00am

WHERE: Meet at the **Narrung Hall** at 10am for field ID at Narrung Wetland followed by propagation and discussion time at the Narrung Learning Centre.

RSVP : by Monday 17th October to Jo McPhee jomcphee@lakeshub.com Ph 0488 465 043 office 85370808

WHEN : Wednesday November 2nd 10.00am

WHERE : Meet at the **Hindmarsh Island Landcare Nursery** (just over the bridge on the right) at 10am.

Travel to sites for field discussion and return to Richard Owen's property for ID and propagation.

RSVP : Monday 24th October to Jo McPhee jomcphee@lakeshub.com Ph 0488 465 043 office 85370808

Light lunch will be provided at both venues

PLEASE WEAR SUITABLE CLOTHING AND BRING OWN WATER

Native Grasses Workshop & Field Trip

The EcoSkills Network at Milang will be hosting a workshop on how to identify and propagate native grass species and their utilisation in land management, agricultural production and vegetation projects.

The presenters will be Bob Myers and Ellen Bennett – Native Grasses Resources Group.

There will be two sessions – All welcome but bookings essential.

Session 1 – What grass is that ? 9.15am 26th October at the Milang ACE Space, Milang Old School House

Session 2 – Field Identification & plant associations 12th November – venue to be confirmed

For more information contact

Shirley Smith office: 85 370 687 mobile :0427 186 593 Email : shirley@moshcc.com.au

SA draft State Natural Resources Management Plan

The Natural Resources Management (NRM) Council have prepared a draft State NRM Plan.

The draft plan proposes a direction for natural resource management in SA for the next decade and beyond. It aims to achieve a balance between environmental, social and economic outcomes.

You are invited to give your opinion on the draft Plan.

For more information go to www.environment.sa.gov.au/haveyoursay/draftstatenrmplan or visit regional NRM Board Offices or local Council offices.

Closing date for submissions is Monday 19th December 2011

Finniss Catchment Group Inc. Community Fund Raiser

Trash and Treasure Car Boot Sale - Old Tools, Bric-à-brac, Antique Furniture, Shed Treasures, Small Equipment, Books, Clothes, Native Plants.

WHEN : Sunday 9th October – gates open 9.30am

WHERE : Braeside Road, Finniss – follow the signs 2.5kms from Strath – Goolwa rd

MORE INFO & SITE BOOKINGS : Heather 0427203870 or Shirley 0427186593



CLLMM monitoring showcase presentation

On the 24th August 2011 the Coorong, Lower Lakes and Murray Mouth (CLLMM) 2010-2011 monitoring activities were showcased at Cleland Wildlife Park. Copies of the 14 presentations are now available in pdf on both the Department For Water (DFW) and Department of Environment and Natural Resources (DENR) websites, at the following locations:

<http://www.waterforgood.sa.gov.au/rivers-reservoirs-aquifers/river-murray/environmental-water-managemen/cllmm-monitoring-showcase/>

http://www.environment.sa.gov.au/Conservation/Rivers_wetlands/Coorong_Lower_Lakes_Murray_Mouth/The_environment/Monitoring_showcase

Some of the key outcomes and learnings from the day included:

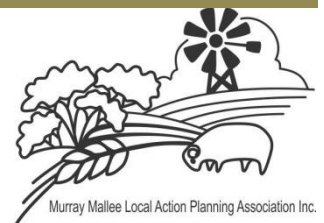
- the timing of delivering water to the Coorong
- the need for long-term data to determine trends and responses
- the need to effectively share information between organisations.

Following is the web site link :

http://www.environment.sa.gov.au/Conservation/Rivers_wetlands/Coorong_Lower_Lakes_Murray_Mouth/The_environment/Monitoring_showcase

JOB VACANCY

The Murray Mallee Local Action Planning Association (MMLAP) is a not-for profit community driven organisation whose key role is addressing and implementing the natural resource management priorities in the SA Murray Mallee.



The Position:

The main role of the Field and Education Officer will be to manage the implementation of two trial/ demonstration projects. This will involve collection of native grass seeds, establishment of a native grass trial and establishment of oil mallee, sandalwood and fodder shrub trials, landholder engagement and education programs and to develop and maintain collaborative partnerships within the region. The position will be funded full-time until September 30th, 2012 with continued employment subject to on-going funding.

Salary range: \$51,000 - \$60,000 per annum

Interested applicants should contact **Alanna Morgan**, telephone (08) 8531 3075 or email alanna.morgan@internode.on.net for a copy of the job and person specifications.

Closing date: Applications close 4th November, 2011

Information about the Murray Mallee LAP and its programs is available at www.malleefutures.org.au

200 cyclists to visit the Lower Lakes of the Murray River and the Coorong in October

From 15 to 23 October, 200 cyclists are set to enjoy the challenge of riding more than 500 kilometres around the Lower Lakes of the Murray River and Coorong region, with Bicycle SA's 2011 Annual Tour cycle event.

Starting and finishing at Murray Bridge, the group of riders – with 80% travelling from interstate, with ages ranging from five to 76 years old – will ride between 50 and 80 kilometres each day, visiting the cultural and environmental attractions of the region.

At each overnight stop, the group will pitch their tents at the local football oval or recreational ground and enjoy the hospitality of local community groups who will provide bar and catering services. The benefits of Cycle Tourism to the local communities are well documented with the influx of cyclists ready to explore and discover local treasures.



Riders will experience the wild Southern Ocean, the majestic Coorong - a Wetland of International Significance - and the iconic Murray River, explore the scenic rolling landscape of the Alexandrina region and indulge in regional food and wine, as well as visiting the aboriginal community of Raukkan and a three hour boat cruise on the Coorong.

For more information, visit www.bikesa.asn.au/annualtour or email rides@bikesa.asn.au.

Update of Basin Plan development

Recently a video was released in which MDBA Chair, Craig Knowles explained the latest thinking on the development of the draft Basin Plan.

Watch the video to hear Craig explain how it's about more than just a volume of water and what localism and adaptive management mean in developing the draft Basin Plan.

The presentation runs for 15 minutes and you can watch it here www.youtube.com/watch?v=WHH0yMLKwLk or you can read a transcript of the talk here: www.mdba.gov.au/media_centre/transcript

RIVER MURRAY – weekly FLOW ADVICE

For weekly flow / level reports on the River Murray and Lakes go to the following website

www.waterforgood.sa.gov.au

Up-to-date River Murray flow and water level information can be accessed at the Department for Water, SA Water and Murray-Darling Basin Authority websites:

<http://data.rivermurray.sa.gov.au>

www.sawater.com.au/SAWater/Environment/TheRiverMurray/River+Murray+Levels.htm

<http://www.mdba.gov.au/water/live-river-data>

Details of river height and rainfall information in the River Murray within Victoria and New South Wales are available at the Bureau of Meteorology website:

<http://www.bom.gov.au/vic/flood>

Information on the discharge of acid drainage water into the Lower River Murray can be accessed online at

www.waterforgood.sa.gov.au

DAILY RECORDINGS – RIVER MURRAY DATA

Data received from <http://e-nrims.dwlbc.sa.gov.au/Telemetry/Default.aspx?App=RMW>

DATE	SEPT 26 - 30 2011		
DATE	SITE	WATER LEVEL AHD	SALT (EC)
26		0.721	703
27		0.809	635
28	GOOLWA	0.749	603
29		0.606	784
30		0.567	2077
	AVERAGE	0.690	960
DATE	SITE	WATER LEVEL AHD	SALT (EC)
26		0.712	502
27		0.728	499
28	MILANG JETTY	0.713	509
29		0.640	450
30		0.676	471
	AVERAGE	0.694	486
DATE	SITE	WATER LEVEL AHD	SALT (EC)
26		0.701	309
27		0.708	300
28	RAUKKAN OFFSHORE	0.707	312
29		0.720	332
30		0.737	342
	AVERAGE	0.715	319
DATE	SITE	WATER LEVEL AHD	SALT (EC)
26		0.677	5258
27		0.735	5231
28	MENINGIE JETTY	0.744	5039
29		0.782	5021
30		0.814	4853
	AVERAGE	0.750	5080
DATE	SITE	WATER LEVEL AHD	SALT (EC)
26		0.698	5697
27	NORTH	0.762	5738
28	WARRENGIE	0.765	5691
29	POINT	0.776	5683
30	LAKE ALBERT	0.765	5644
	AVERAGE	0.753	5690

Information from the Water for Good – River Murray Flow Advice Update – Sept 30th 2011

Closing of some barrage gates has taken place to gradually increase the water level in both lakes. This will facilitate the freshening of Lake Albert. Barrage gates are being operated to increase the water level by an average of 10 mm/day with the aim of reaching a target water level of 0.85m AHD by mid October 2011.

Monthly Averages for September 2011

THIS TIME 13 MONTHS AGO – AUGUST 2010

GOOLWA	0.610	4067
MILANG	0.620	530
RAUKKAN	0.651	367
MENINGIE	0.699	5429
WARRENGIE	0.701	5646

Clayton
Milang
H.Island
Albert

WATER LEVEL AHD	PH	SALT (EC)
0.121	8.27	15146
0.456	7.95	3581
0.435	8.67	18924
-0.389	8.79	12159

CALENDAR OF EVENTS for more info contact the Lakes Hub

If you have any relevant community event or courses that you would like added to the Calendar of Events please contact the Lakes Hub.

October 2011

1	Native plant sale – Alexandrina Nursery, Kessell Rd, Goolwa (near council Depot) 11.00-3.00pm Contact ph 8554 2555
2	
3	Public holiday – Strathalbyn Show (GWLAP & HUB trade site near Football Clubrooms)
4	
5	Opening of Pelican Path , Lions Park, Meningie 10.30 – 11.30am
6	
7	
8	Port Elliot Show – Hub site Goolwa Alive – Hub site
9	Port Elliot Show – Hub site
10	
11	
12	GWLAP AGM 7.30pm. Speaker Dr Daniel Rogers ‘Migratory Birds of the Coorong’ All welcome Contact Tony Randall by Friday October 7th 2011 on 8536 5612 or 0427 917 511 or by email: tony.randall@qwlap.org.au
13	
14	
15	
16	
17	
18	
19	
20	
21	
22	
23	
24	
25	
26	TALKING HEADS – Vegetation prioritization Planning – community input sessions. Meningie & Milang – more info to follow. Native Grasses workshop – 9.30 ACE Space, Milang Old School House Contact Shirley Smith to book : office 85 370 687 mobile 0427 186 593 Email shirley@moshcc.com.au
27	
28	
29	
30	
31	

Disclaimer

All the links and articles in this Bulletin are provided as a courtesy to recipients. While I try and keep these links and articles as up-to-date as possible, I can't guarantee their accuracy, adequacy, timeliness, or completeness.

In addition, the existence of a link to another site or resource does not constitute a recommendation or endorsement of that site or resource. The Lakes Hub does not accept responsibility or liability for any information at any of the sites linked to from this Bulletin.

If you feel a link description, site, piece of advice or anything else mentioned here is inappropriate, do [let me know](#) and I will endeavour to correct it where necessary.